

WE SUPPLY THE INDUSTRY



WEAR RESISTANT SYSTEMS & ADHESIVES



ELI-BOND

Alumina Ceramic tile adhesives - Standard & Fast setting, Electrical adhesives, Road stud adhesives



FR961
FR961FS
FR961TA
FR961TAFN

FR972AHT
FR964LC
FR914
FR166



ELI-COTE

Wear compound standard, heavy wear & High temp, Pump lining Gel coat.



FR985
FR1013

FR1008/D
FR1008HT3



ELI-DUR

Rubber repair kits - Liquid and Paste



FR70P

FR70L



ELI-FIL

Metal repair kits, Concrete repair epoxy and more.



FR955
FR983
FR986

FR179
FR912
FR913





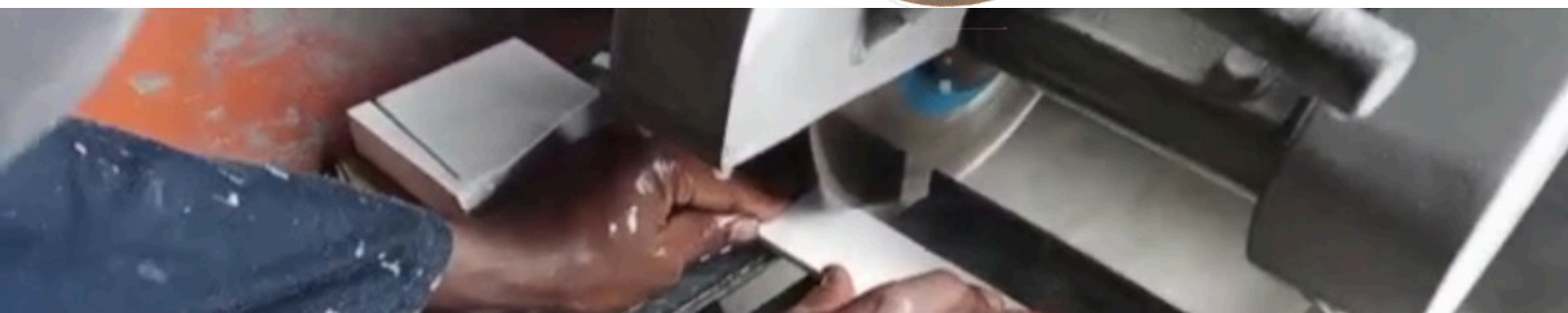
Alumina Ceramic Wear Resistant Tiles

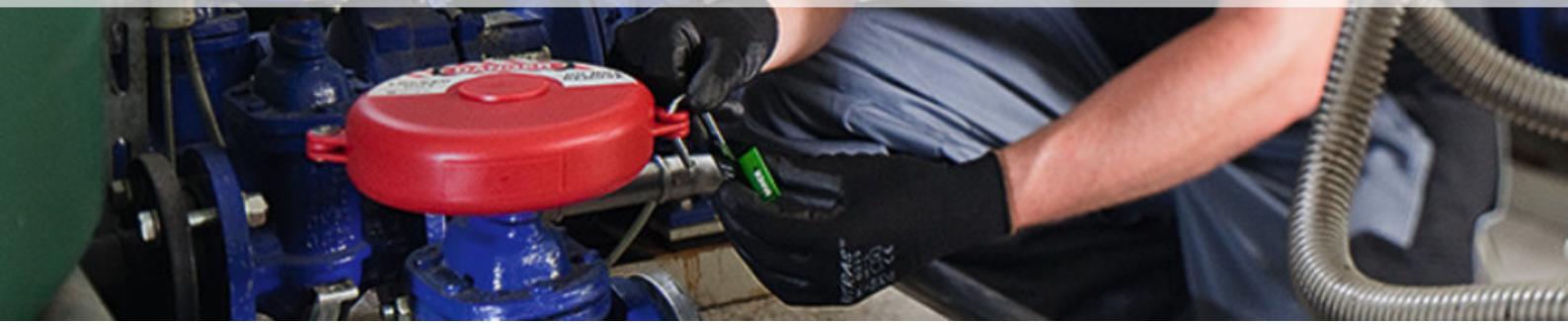
Ceramic tiles and related products used by Aviocean Global are made to very specific specifications and maintain a high-grade of no less than 92% alumina content which is wear resistant, counters moisture and creep sulphide attack. Tiles are embedded into an epoxy tile adhesive which is applicable to the application. Ceramic lining increases the life span of steel and related products which are subject to severe erosion.

Tiles are available in various dimensions and thicknesses as required by each application. Pre-engineered tiles are also available for piping of various diameters and specialised pre-engineered sets for cyclones and similar applications.



Specialized Cutting and Grinding disc for Alumina Ceramic Tiles





Industrial Safety

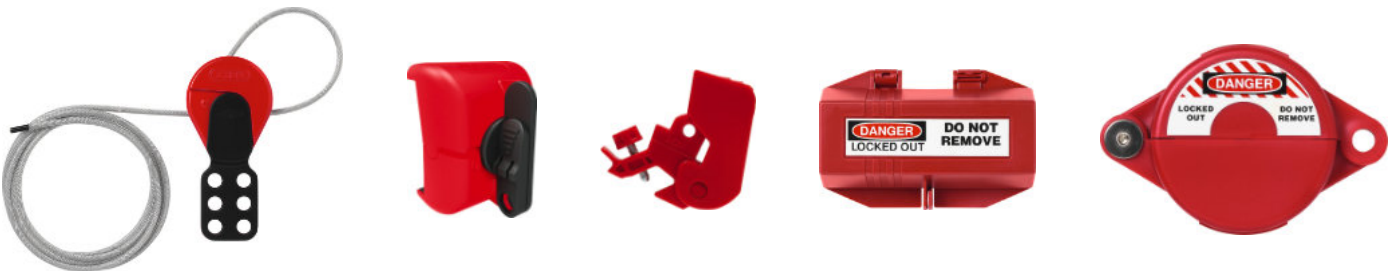
Safe Workplace. Protected Employees



Safety & Security Padlocks



Lockout devices



Group lockout





Control, manage & audit the use of keys and equipment

Traka solves the biggest challenges in managing keys, vehicles, shared devices, and equipment for virtually any business, giving you total control over who can access these items, and when, with an audit trail of every transaction.

More than just a key cabinet, your business can expect to see measurable value in the improved processes and greater efficiency that only Traka solutions can offer.

Intelligent key cabinets

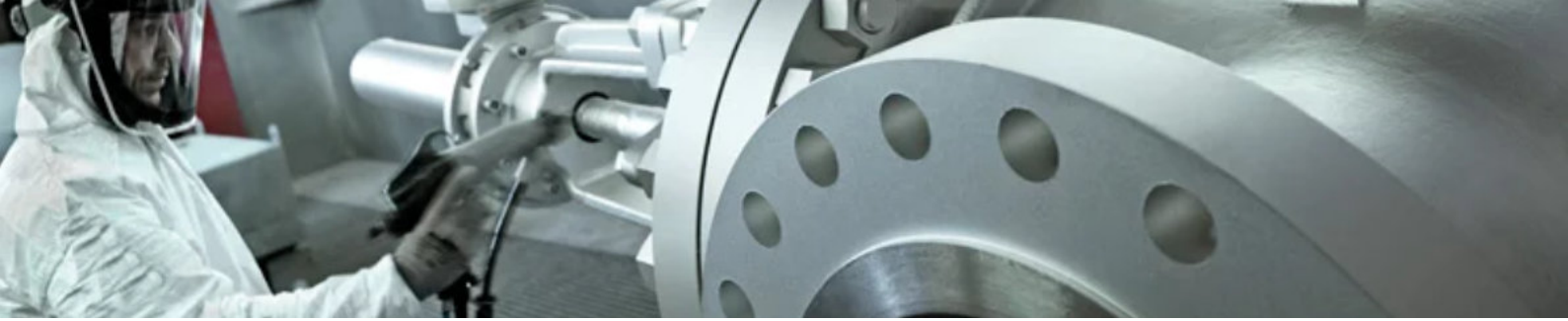
Traka Touch Pro electronic key cabinets build on the success of the proven Touch range providing businesses with a more secure, reliable and durable key management system built for the modern world.



Intelligent locker systems

For the intelligent storage and control of equipment such as laptops, handheld devices, medicines or firearms our electronic lockers are the solution. From managing access, charging and distribution there are multiple ways to control and optimize usage.





A premier manufacturer and distributor of high quality paints in South Africa. We specialise in Automotive, Industrial and Decorative paint lines both locally and for export.

GLASSGO PAINTS
PAINT MANUFACTURERS



QD Paints | Primers | Direct to Metal paint (DTM) | Floor Epoxy | Thinners | Sealing paints

PROFESSIONAL IRIDA

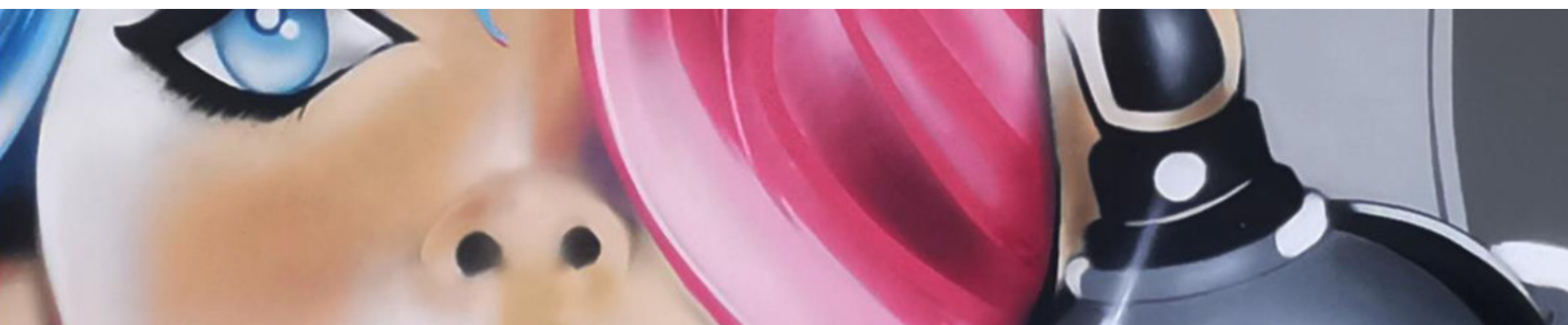
WITH AN
ADJUSTABLE
NOZZLE & UNIQUE
WIDE SPRAY
PATTERN



Quick-drying, acrylic paint with excellent coverage for automotive and general decorative use. Ideal for spot repairs and isolated panel paintings.

Available in a wide variety of RAL shades and any shade can be produced upon request.

- Easy to use and economical.
- Fast drying with excellent results.





ZINCODIC EXTREME TOP COAT

ZINC CATHODIC COATING

UNRIVALED DURABILITY FOR THE HARSHEST OF ENVIRONMENTS



ZINCODIC EXTREME TOP COAT Epoxy(Meth)Acrylate Urethane is specifically designed to withstand extreme and harsh environments. This product offers excellent UV resistance, ensuring long-lasting protection against the damaging effects of the sun's rays.

With its outstanding chemical resistance, **ZINCODIC** is capable of resisting a wide range of chemicals, making it suitable for use in various industrial settings. The epoxy(meth)acrylate urethane formula provides exceptional impact resistance, ensuring durability even in high-impact applications.

ZINCODIC is highly wear-resistant, making it ideal for surfaces that experience heavy use or abrasion. This product boasts a low toxicity level, ensuring a safe application process for both the user and the environment.

The easy application of **ZINCODIC** allows for a hassle-free and efficient coating process, saving time and effort.



HIKOKI

UNLEASH the NEXT

Ergonomics is in our DNA. Well-designed, easy to operate, comfortable, reliable, safe.

HITACHI → **HiKOKI**
HITACHI POWER TOOLS UNLEASH the NEXT





e-ELI-WRAP

Pipe Repair Bandages are fast action emergency pipe repair systems that stop leaks instantly.



RHODIUS

RHODIUS is a global, innovative manufacturer of high-performance tools for machining metal and stone based in Germany.

- Mild Steel Cutting disc
- Stainless Steel Cutting disc
- Cutt off Machine cutting disc
- Mild Steel Grinding disc
- Stainless Steel Grinding disc



Manufacturer and producer of professional tools of the highest quality, specialising in exceptional bonded and coated products for any application.



- Bulldog Gold Flap disc
- Bulldog Silver Flap disc
- Bulldog Homegrown Flap disc
- Bulldog Ceramic Flap disc
- Bulldog Efficiency Flap disc





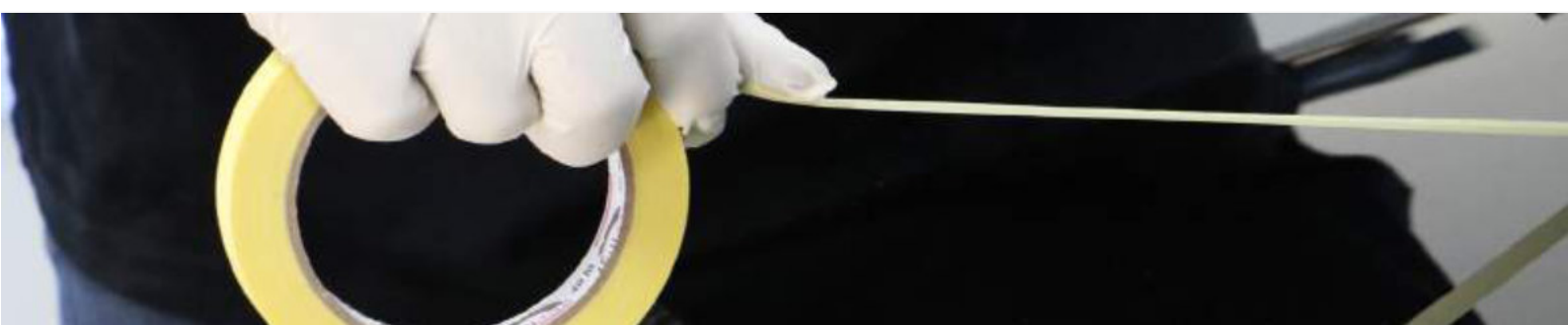
Garryson

an ata company

ATA Garryson is the world's leading manufacturer and distributor of precision engineering tungsten carbide and related products for companies requiring a comprehensive range of material removal and finishing solutions. They are the only precision engineering company in the world to provide both tools and consumables for deburring, material removal and finishing needs.



Bulldog Abrasives Southern Africa (Pty) Ltd have spent the last 21-years sourcing a comprehensive range of "Homegrown" products to suit our customer's needs. Our automotive range consists of an array of products from automotive masking tape to masking film to pneumatic tools. All of our "Homegrown" products are economically priced and solid performers in every application.



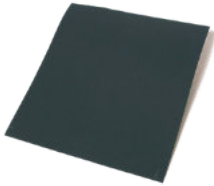


Mirka Ltd is a world leader in surface finishing technology, offering a broad range of groundbreaking sanding, polishing and automated solutions for the Automotive, Industrial, Woodworking and Retail sectors. Their innovative products deliver real benefits in terms of speed, efficiency and cost-effectiveness, even when tackling the most demanding applications.

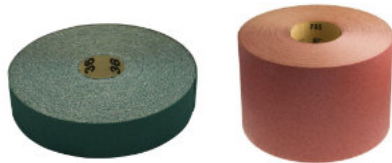
GOLD COATED ABRASIVE DISCS



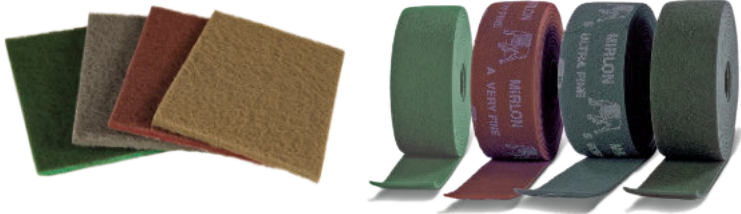
WATER PAPER SHEETS



PRODUCTION PAPER ROLLS



MIRLON PAD AND ROLLS



As a dynamic and established player in the market, **Spanjaard** offers you a proven range of world-class special lubricants to meet your needs.

All over the world companies rely on Spanjaard Limited's special lubricants and allied chemical products to help meet their unique requirements. With a range of 150 specialised products that have been uniquely tried, tested and developed using the latest technology you are sure to find a product that is ideally suited to your unique requirements and applications.





Our Core Values

At Fotodesign, we hold a set of **core values** that guide our every action and decision. We are committed to **solving real problems** and providing our customers with **quality products** that **exceed their expectations**. We believe that a great **user experience** is essential to our success and strive to **deliver on our promises** every time.

Moreover, we understand the importance of building a strong **community and fostering meaningful relationships** with our customers. We are dedicated to providing **excellent customer service**, ensuring that every interaction is **professional, courteous, and efficient**.

At Fotodesign, we believe that our success is directly tied to our **adherence to these core values**. We are committed to **upholding these principles** in everything we do, as we work to build a company that is respected and trusted by our customers and partners alike.

Company Details

Contact no office:	013 101 3833
Email:	sales@fotodesign.co.za
Website:	www.fotodesign.co.za
Physical Address:	28B Stevenson street, Extension 8, Emalahleni Mpumalanga, South Africa
Registration no:	2019 / 464103 / 107
Vat no:	401 029 0395
B-BBEE Contribution:	Level 2 - 51% Black owned; 34% Black Youth



Contact no office: 013 101 3833

Email: sales@fotodesign.co.za

Website: www.fotodesign.co.za

WE SUPPLY THE INDUSTRY